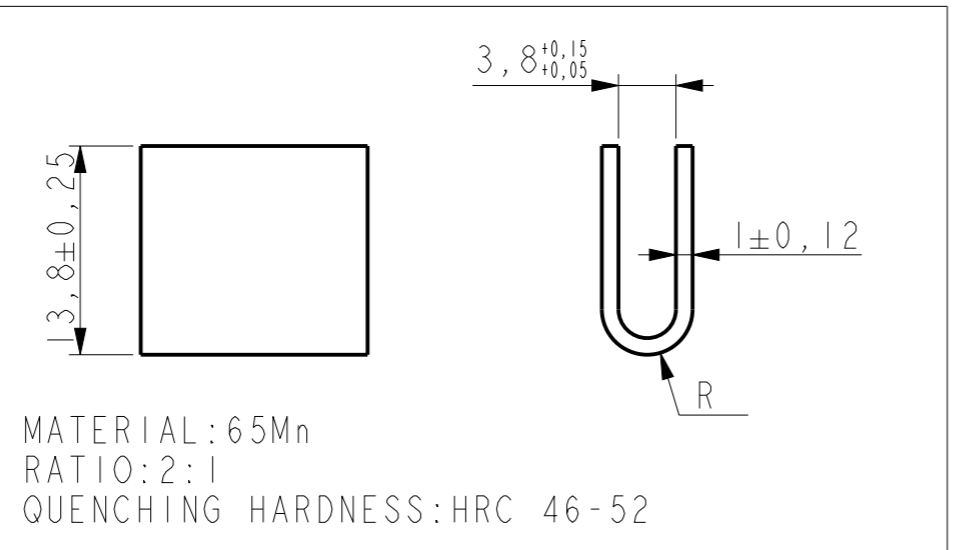
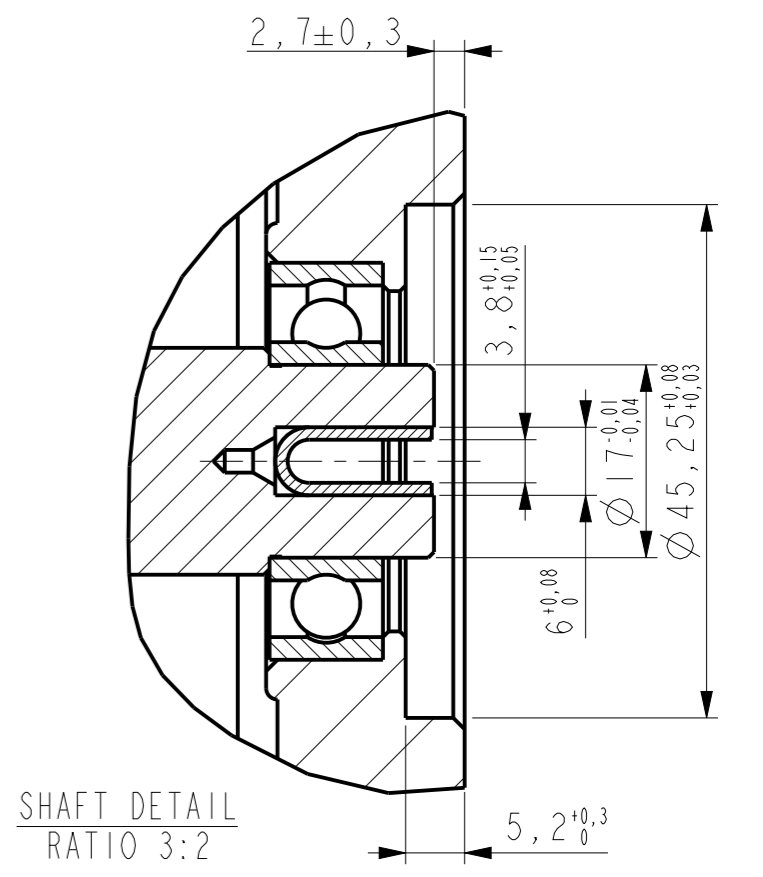


TECHNICAL DATA	
VOLTAGE	24 V
POWER	2.5 KW
SPEED AT 10NM	2650 RPM
ROTATION	CW
WORKING MODE	S2 = 2MIN S3 = 8%ED
PROTECTION GRADE	IP 54
INSULATION CLASS	F
MASS	6.9 KG
EXTERIOR	ZINC SILVER



- NOTES:
 1. END OF SHAFT HARDENED TO HRC 46-52
 2. MOTOR FRAME AND ALUMINIUM END HEAD
 3. ▲ MARKED AS THE KEY SIZE



SHAFT DETAIL
RATIO 3:2