

A pressure relief valve can be externally piped to port X for remote setting of pressure below the setting of the DR control valve spool. This relief valve is not included in the delivery contents of the DRG control.

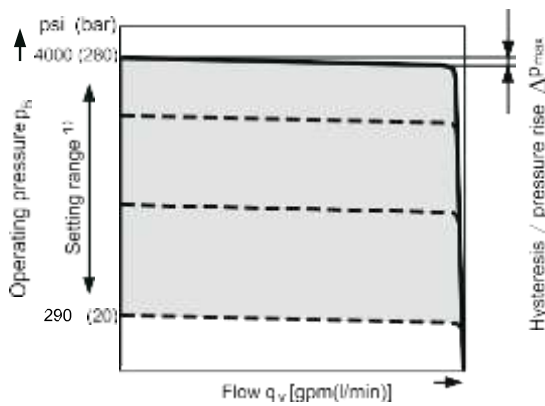
The differential pressure at the DRG control valve is set as standard to 290 psi (20 bar). This results in a pilot oil flow to the relief valve of approx. 0.4 gpm (1.5 l/min) at port X.

Setting is required (range from 145 to 320 psi (10-22 bar)) please state in clear text.

The max. length of piping should not exceed 6.6 ft (2m).

Static characteristic

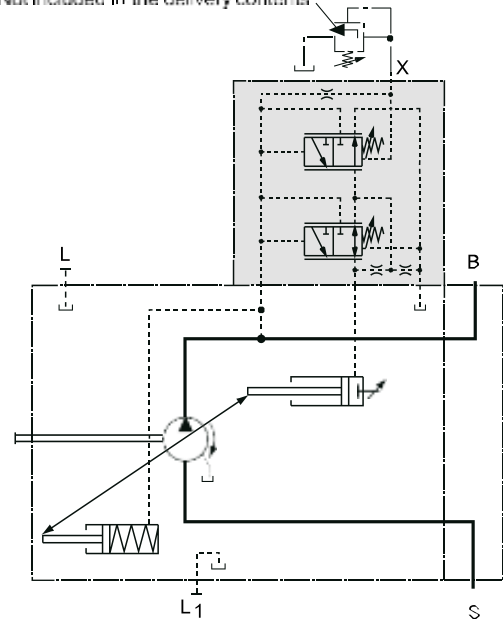
(at $n_1 = 1800$ rpm ; $t_{fluid} = 122^\circ\text{F}$ (50 °C))



In order to prevent damage to the pump and the system, this setting range is the permissible setting range and must not be exceeded. The range of possible settings on the valve are wider.

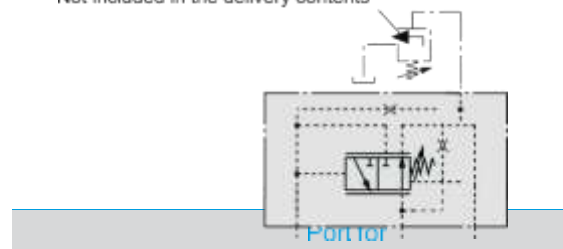
Circuit diagram, sizes 18 to 100

Not included in the delivery contents



Circuit diagram, size 140

Not included in the delivery contents



B	Service line
S	Case drain
L, L1	Case drain (L1 plugged)
X	NG 18 to 100 Pilot pressure without adapter
X	NG 140 Pilot pressure with adapter

Control data

Hysteresis and repeatability Δp_{max} approx. 45 psi (3 bar)

Pressure rise, maximum

NG	18	28	45	71	100	140
Δp psi (bar)	60 (4)	60 (4)	90 (6)	115 (8)	145 (10)	175 (12)

Contr. fluid consumption max. approx. 1.2 gpm (4.5 l/min) please see page 9